



KECC UPDATE

Issue 7

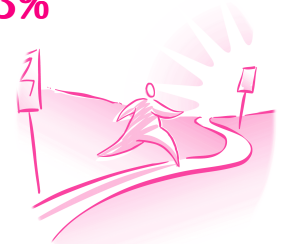
November 6, 2000

Head Coach McCloud Beats the Drum



Dollars to Date: \$1,027,751
Percent of Goal: 73.3%

Our Goal:
\$1,400,000



Teamwork 2000
"Head Coach"
Sec. Ron McCloud

Our KECC Teamwork 2000 campaign is coming down the final stretch and I want to appeal to you on behalf of the numerous charities and many recipients of their services. We need your help in rounding up all pledge forms and contributions. Only

through your efforts will our campaign succeed in meeting our goal of \$1.4 million by November 14th.

On behalf of all the charities, I sincerely want to thank you for your hard work up to now. Yes, the overall campaign is behind. **We still need \$372,249. That means \$124,083 for every work day from now to the Victory Celebration!**

KECC Coordinators cannot give up. The goal is a challenging one, but you can't quit. Too many Kentuckians in need are depending on us. Many reports are still out. Let your teammates know your cabinet's standing in the campaign. Now is the time to act! You've done your planning; all the pieces are in place. We are down to the wire. No more procrastinating! Send out reminders. **"Give with your heart!"**

Come to your Victory Celebration!

Kentucky Bowl 2000

Farnham Dudgeon Civic Center

Tuesday, November 14

3:00 p.m. - 4:30 p.m.



BRAGGING RIGHTS!!



The number of cabinets that have exceeded last year's total has grown from 10 to 15 since last week. But, more important, cabinets who have achieved 135% or more of their

'99 total are up from 3 to 6. And 3 more are over 90% of that goal.

This week, braggin' rights go to the Treasury Department. After last year's set back, they have moved to recover 243.9% of '99's total, and 180% of the 135% goal!

Want to do some bragging of your own?
Drop a line to cgill@crnky.org



Campaign Award Nominees

A record number of nominations are in for **Best Overall Campaign Performance** and **Most Spirited Campaign**. They are being reviewed by an independent panel of judges. Every nominee will be recognized during the Awards Ceremony at **Kentucky Bowl 2000** (see page one). Be sure to attend and bring your coworkers!

Here is a list of the nominees:

Most Spirited Campaign Large Cabinets

Cabinet for Families and Children

Community Based Services/Family Support
Campbellsville

Cabinet for Families and Children

Cumberland Service Region/Family Support
Greensburg

Natural Resources and Environmental Protection Cabinet

Department of Surface Mining
Frankfort

Cabinet for Families and Children

Lake Cumberland Service Region/Community Based
Services
West Somerset

Health Services Cabinet

Department for Mental Health/Mental Retardation/
Western State Hospital
Hopkinsville

Revenue Cabinet

Frankfort
Steve Crawford

Transportation Cabinet

Division of Traffic
Frankfort

Cabinet for Families and Children

Community Based Services/Northern KY Service Region
Newport

Transportation Cabinet

Department of Highways/District Three
Bowling Green

Finance and Administration Cabinet

Kentucky Housing Corporation
Frankfort

The Numbers

KECC	YTD	11/6/00
Cabinet	YTD	% 1999
Agriculture	6,817	108.8%
Attorney General	10,764	118.2%
Auditor	11,180	92.2%
County Clerks	8,675	67.6%
Economic Dev.	10,745	166.7%
Ed, Arts & Humanities	43,317	88.0%
Families & Children	124,147	120.9%
Finance/Adm.	37,383	88.5%
Governor	30,882	100.5%
Health Services	103,315	109.3%
Human Rights	4,032	86.3%
Judicial Branch	24,103	78.4%
Justice	86,870	97.3%
KCTCS	29,557	29.0%
KY Retirement Sys.	7,053	126.3%
Labor	25,454	183.4%
Legislative Research	11,107	98.4%
Military Affairs	12,825	124.1%
Misc Boards	3,024	85.6%
Natural Resources	29,098	89.2%
Personnel	13,243	137.1%
Post Secondary Ed.	6,162	115.9%
Public Protection	86,293	160.5%
Revenue	43,806	126.3%
Secretary of State	3,616	88.8%
Tourism	23,106	92.6%
Transportation	180,297	90.0%
Treasury	4,198	243.9%
Unified Prosecutorial	2,788	67.9%
Workforce Dev.	43,894	142.5%
Total	\$1,027,751	98.9%
Goal	\$1,400,000	135.0%

continued on page three

continued from page two

Best Overall Campaign Performance Large Cabinets

Transportation Cabinet

Department of Highways/District Six
Covington

Cabinet for Families and Children

Lake Cumberland Region/Community Based Services
West Somerset

Cabinet for Families and Children

Bluegrass Rural Region
Cynthiana

Natural Resources and Environmental Protection Cabinet

Department for Environmental Protection
Frankfort

Cabinet for Families and Children

Big Sandy Region/Community Based Services
Paintsville

Cabinet for Families and Children

Cumberland Valley Region
London

Cabinet for Families and Children

Community Based Services/Russell County
Jamestown

Cabinet for Families and Children

Lake Cumberland Service Region/Family Support
Greensburg

Health Services Cabinet

Department for Mental Health/Mental Retardation/Western
State Hospital
Hopkinsville

Cabinet for Families and Children

Community Based Services/Family Support
Campbellsville

Revenue Cabinet

Frankfort

Transportation Cabinet

Division of Traffic
Frankfort

Transportation Cabinet

Department of Highways/District One
Paducah

Cabinet for Families and Children

Community Based Services/Northern KY Service Region
Newport

Finance and Administration Cabinet

Kentucky Housing Corporation
Frankfort

Most Spirited Campaign Small Cabinets

Human Rights Commission

Louisville

Jefferson County Clerk's Office

Louisville

Labor Cabinet

Frankfort

Council on Postsecondary Education

Frankfort

Treasury

Frankfort

Best Overall Campaign Performance Small Cabinets

Jefferson County Clerk's Office

Louisville

Treasury

Frankfort

Human Rights Commission

Louisville

Council on Postsecondary Education

Frankfort

