



KECC UPDATE

Issue 3

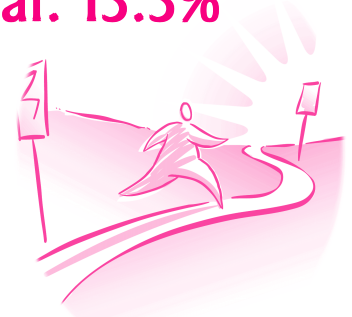
September 12, 2000

Hardin County PVA Assists KECC

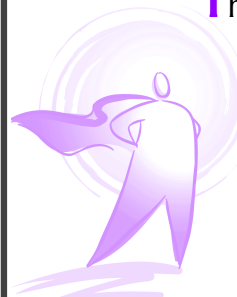
Susan E. Howard, Principle Administrative Assistant, true to her title, has been a great source of assistance for us in Hardin County during this year's campaign. In a concerted effort to reach as many state and county employees (as applicable) in Hardin County, we are trying a different approach to the KECC presentations. Susan and Teri Bennett, PVA Hardin County, have generously offered the use of the newly renovated meeting room in the historic RR Thomas Building for the presentations. Susan has also agreed to serve as coordinator for the event. The employees, both state and county that will attend the presentations are as varied as the PVA, Circuit and District Court Staffs, County Clerk Staff, County and Commonwealth Attorney's staff and the Sheriff's Department. Through this type of venue we hope to be able to extend our outreach to individuals that may not have been to a KECC meeting in prior campaigns.

Dollars to Date: \$183,842
Percent of Goal: 13.3%

Our Goal:
\$1,400,000



Bragging Rights!!



There is barely enough room in this week's column for all the bragging to be done! Five cabinets are already over fifty percent of last years totals.

The Governor' Office logs in **67.9%**, Labor **62.9%**, Legislative Branch **75.5%**, Revenue **83.9%**, and Secretary of State's Office at **52.9%**.

But once again, the Emmy goes to Personnel who have turned in **127%** of last years total to date!

Want to do some bragging of your own?
Drop a line to cgill@crnky.org

Not Rain, Nor Snow, Nor Gloom of Night ...

The enthusiasm of state employees for KECC knows no bounds! Last Friday's Golf Scramble, hosted by Public Protection and Regulation on the Links at Ducker's Lake, went off without a hitch.



In spite of Mother Nature's attempts to rain it out, a full roster of 48 teams was fielded bringing in about \$6000! In addition to a full round of golf, participants were able to buy breakfast and lunch, as well as participate in a putting contest.

Blanch Minor and Skip Zimmerman brave the elements at Public Protection's Golf Scramble



The Numbers

KECC Cabinet	YTD	9/01/00 % 1999
Agriculture	1,304	20.8%
Attorney General	2,253	24.7%
Auditor	0	0.0%
County Clerks	0	0.0%
Economic Development	0	0.0%
Ed, Arts & Humanities	4,578	9.3%
Families & Children	7,301	7.1%
Finance/Administration	3,170	5.7%
Governor	11,587	67.9%
Health Services	21,398	22.6%
Human Rights	1,584	33.9%
Judicial Branch	8,178	26.6%
Justice	2,781	3.1%
KCTCS	0	0.0%
KY Retirement Systems	2,062	2.0%
Labor	8,732	62.9%
Legislative Research	8,523	75.5%
Military Affairs	0	0.0%
Misc Boards	0	0.0%
Natural Resources	1,920	5.9%
Personnel	12,265	127.0%
Post Secondary Ed.	0	0.0%
Public Protection	22,105	41.1%
Revenue	29,085	83.9%
Secretary of State	2,156	52.9%
Tourism	0	0.0%
Transportation	32,859	16.4%
Treasury	0	0.0%
Unified Prosecutorial	0	0.0%
Workforce Development	0	0.0%
Total	\$ 183,842	17.7%
Goal	\$1,400,000	135.0%

Things You Should Know



Just a few reminders from your administrator as you put together your report envelopes:

- **E**very gift is a designated gift. Be sure your pledge cards indicate where they want their gifts to go.
- **W**hile we appreciate your thoroughness, you can help speed up our work by leaving out \$0 pledge cards.
- **B**e sure to separate yellow copies and give them to your payroll officers.

We have plenty of brand new posters, report envelopes and blank pledge cards. Contact **Deby** at 502-589-2296 or ddavis@crnky.org if you need supplies or help with reports.

Your next Report Meeting is September 20th.

Show Your Stuff!

We will be assembling a Power Point Slide Show to be featured at our Victory Celebration November 14th. The presentation will consist of images documenting the Teamwork 2000 Campaign. The call is out for contributions. If you have any photos from special events or other KECC related activities, or if you have put together a flyer or other printed materials which you would like included, please e-mail them to cgill@crnky.org, or mail them to:

KECC
P.O. Box 4653
Louisville, KY 40204-0653

